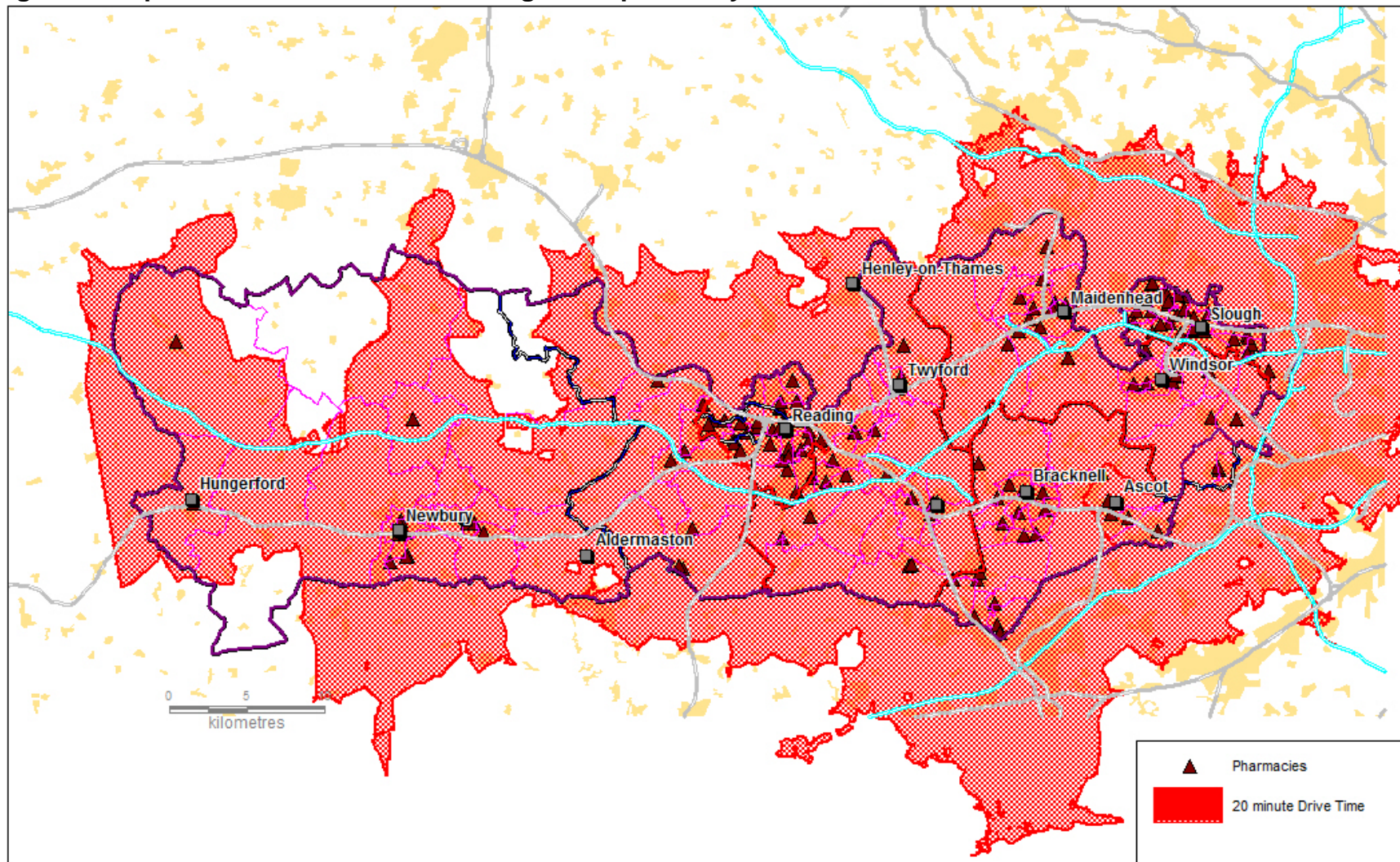


## Appendix 5: Access Times

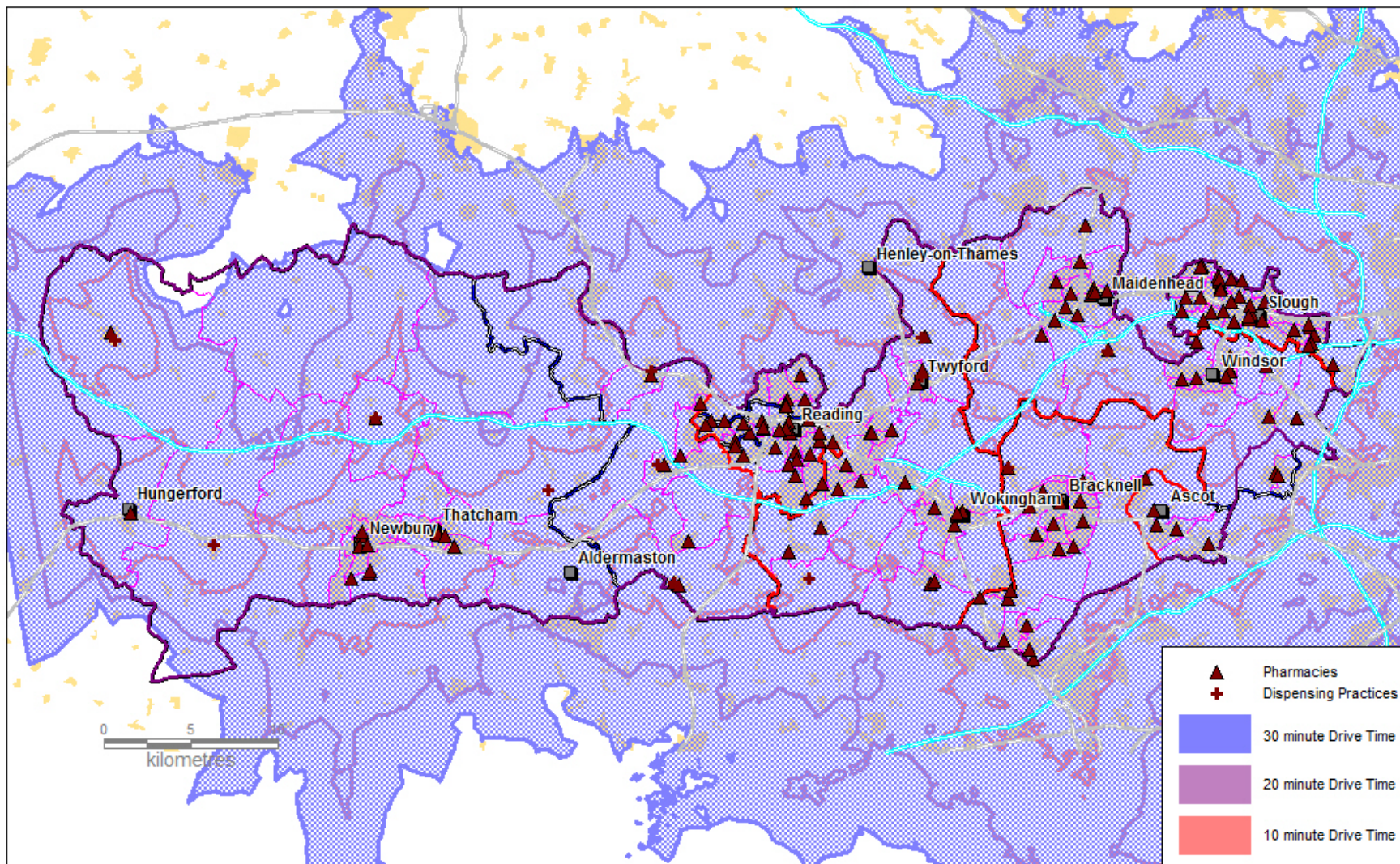
Figure 1: Population of Berkshire that can get to a pharmacy within a 20-minute drive time



Berks\_PNA\_Apr14\_v1.wor 15/05/2014 Sid Beauchant BHFT

Reproduced from OS data by permission of Ordnance Survey, on behalf of the Controller of Her Majesty's Stationery Office (Licence No. OSKWFG1110), NAVTEQ data by permission of NAVTEQ Corporation Licence No. NVMM0611, NVMM0612) GeoPlan data by permission of Geoplan (Licence No. GPKW9912) © Crown Copyright - 2014 All rights reserved

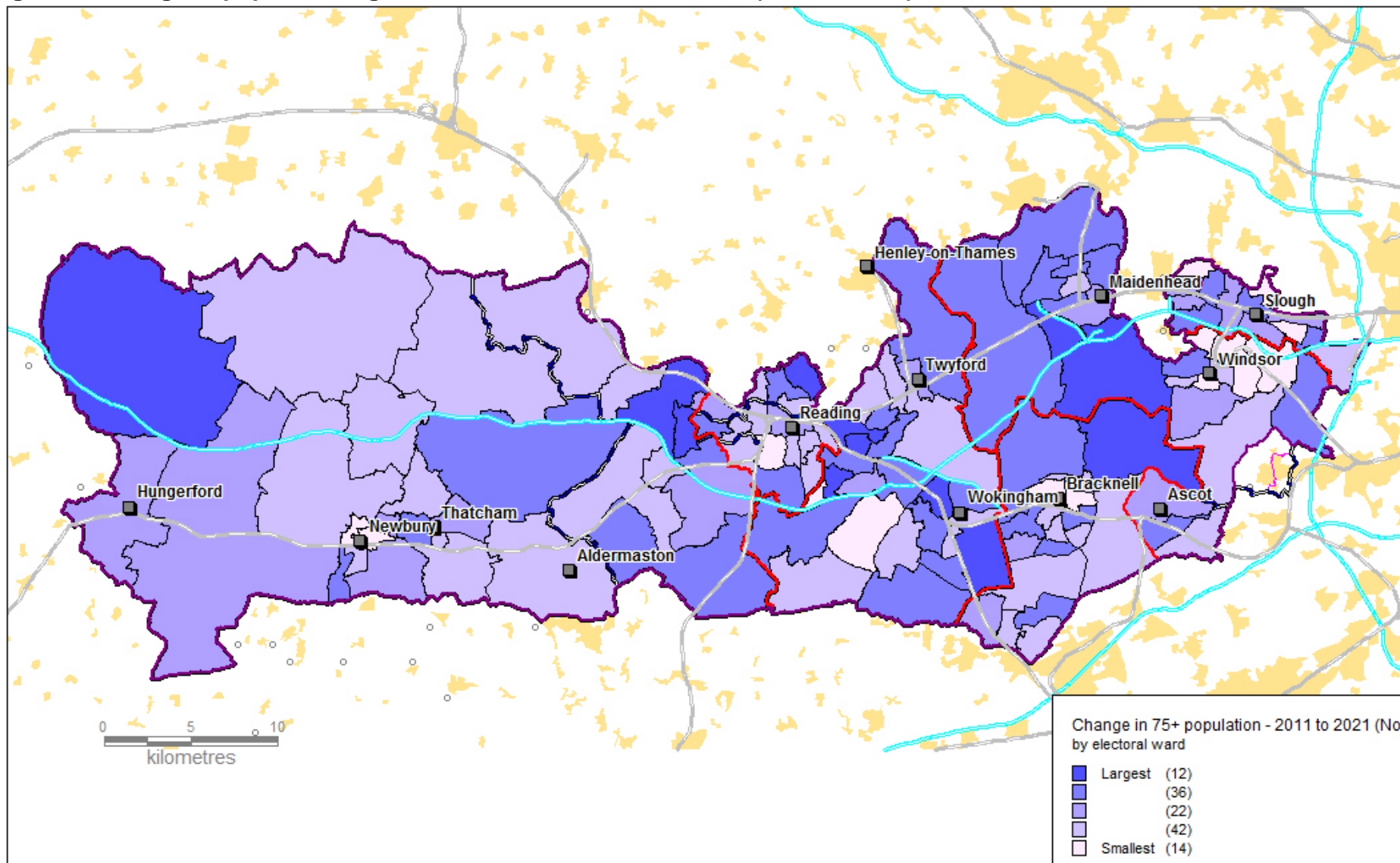
Figure 2: Population of Berkshire that can get to a pharmacy within a 10, 20 or 30 minute drive time



Berks\_PNA\_Jul14\_v1.wor 14/07/2014 Sid Beauchant BHFT

Reproduced from OS data by permission of Ordnance Survey, on behalf of the Controller of Her Majesty's Stationery Office (Licence No. OSKWFG1110), NAVTEQ data by permission of NAVTEQ Corporation Licence No. NVMM0611, NVMM0612) GeoPlan data by permission of Geoplan (Licence No. GPKW9912) © Crown Copyright - 2014 All rights reserved

Figure 3: Change in population aged 75 and over within Berkshire (2011 to 2021)



PROJ\_Local\_2011\_Ward\_Berks.wor 19/05/2014 Sid Beauchant BHFT

Reproduced from OS data by permission of Ordnance Survey, on behalf of the Controller of Her Majesty's Stationery Office (Licence No. OSKWFG1110), NAVTEQ data by permission of NAVTEQ Corporation Licence No. NVMM0611, NVMM0612) GeoPlan data by permission of Geoplan (Licence No. GPKW9912) © Crown Copyright - 2014 All rights reserved